

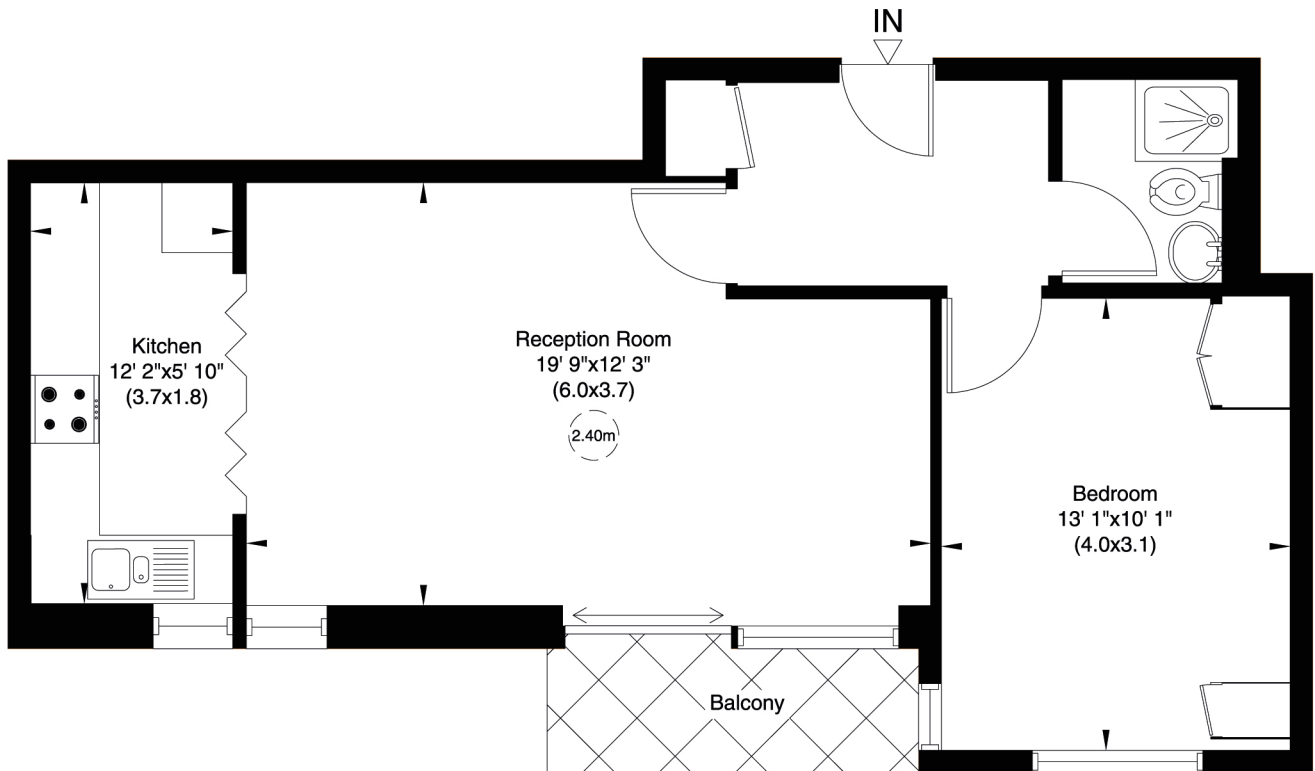
39A Regent Court, North Bank, Saint John's Wood, NW8

Gross internal area (approx.)

50 Sq m (538 Sq ft)

For identification only, Not to Scale

capital 020 8671 7722



Fourth Floor

Not to scale, for guidance only and must not be relied upon as a statement of fact. All measurements and areas are approximate only (and have been prepared in accordance with the current edition of the RICS Code of Measuring Practice).